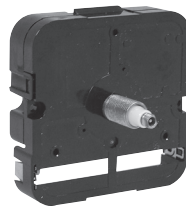
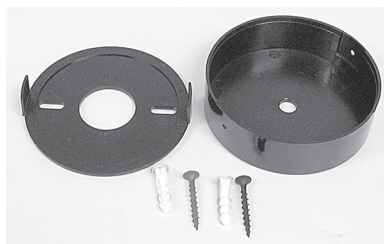


INSTALLATION INSTRUCTIONS FOR WALL MOUNTED CLOCKS WITH EXTRA-LONG HANDS

WHEN USING THE WALL MOUNTING CUP

Please note that the WALL CUP consists of two parts; a Back Plate with two legs and a Front Cup with two slots on the inside that fit over the legs of the Back Plate.

- 1) Fasten the Back Plate of the Wall Mounting Cup onto the wall using the anchors and screws provided. The two tabs protruding from the Back Plate can be either vertical or horizontal.
- 2) Place the black rubber washer provided with the clock movement onto the shaft of the clock, then place it through the center hole of the Cup. Place the metal washer onto the clock shaft, then screw the fastening nut onto the shaft. Align the clock movement so that when it is installed on the Back Plate the battery compartment will be on the bottom. Tighten the fastening nut do not over-tighten it as this could damage the clock movement.
- 3) Place the hour hand onto the shaft of the clock. Place it at the 12 o'clock position. Press it down onto the white plastic part of the hand shaft. This can be done using the tips of your thumbs to carefully work the hour hand from side to side until it is properly seated. Be careful not to bend the hour hand and to keep it level with the front of the clock movement.
- 4) Being careful not to bend the minute hand place it over the tip of the hand shaft of the clock. Note that there are two flat sides on this part of the shaft that should align with the flat sides of the hole in the minute hand. Now add the small cap nut to the hand shaft to hold the minute hand in place and tighten it down with just your fingers. The minute hand should now be held securely on the shaft and the hour and minute hand parallel to each other.
- 5) **Holding the Mounting Cup vertically use the time setting wheel on the back of the clock movement to rotate the minute hand to make sure it is free of any interference with the hour hand. If necessary you can very gently bend the hands to straighten them.**
- 6) Using the time setting wheel again set the proper time on the clock movement. You may have to gently adjust the hour hand by pushing on the edge of the hand to align it with the exact hour.
- 7) Add a fresh AA size alkaline battery according to the diagram at the back of the battery compartment and then place the Mounting Cup over the Black Plate, aligning the legs on the Back Plate with the slots on the inside of the cup. Final adjustments can be made again using a gentle nudge on either of the hands.



WHEN USING METAL HANGER

- 1) Place the metal Hanger over the hand shaft of the clock movement with the hole at the top of the Hanger at the rear of the movement.
- 2) If you are using a clock dial or other type of clock face pass the shaft of the clock movement through the dial from the rear, then add the black rubber washer, the brass metal washer and the fastening nut. Tighten the nut down with your fingers - but do not over-tighten as this could damage the clock movement.
- 3) Follow the Instructions above for steps 3 through 6.
- 4) Add a fresh AA size alkaline battery according to the diagram at the back of the battery compartment and make any final adjustments of the hour and minute hand by gently nudging them.

